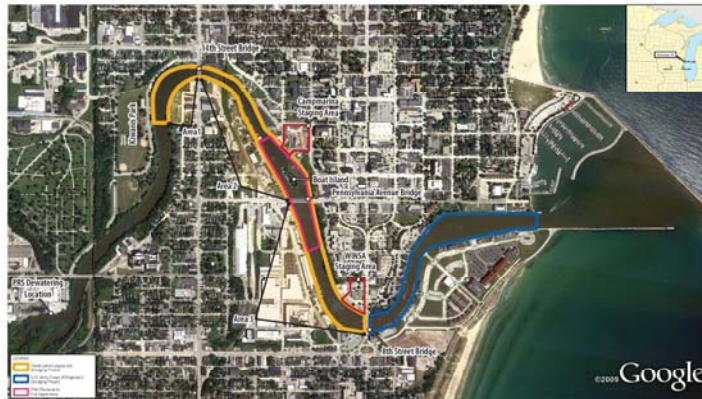


WISCONSIN GREAT LAKES AOC REMEDIATION FORUM

April 23, 2015



SHEBOYGAN RIVER GLNPO PROJECT



A 0 500 1,000
Feet
Scale of Map
Map Data © 2015 Google

Figure 1
Site Map
Sheboygan River GLNPO
Remedial Investigation - Scope of Design
Sheboygan, WI
CH2M HILL

PROJECT PLANNING

- Integrate GLNPO into overall project goals accounting for:
 - schedule
 - resources
 - budget
- Developing a core group consisting of:
 - **community leaders**
 - **regulators**
 - **responsible parties**
- How is the project funded?



PROJECT EXECUTION

- Administrative requirements - project agreements
 - feasibility and design
 - remedial action
- Collaborative effort
 - working toward a common goal
 - “how can we” vs. “why we can’t”
- Continuous communication
- Flexibility



KEY TAKEAWAYS

- Effective project planning is critical
- Community support/involvement is key to success
- Cooperative team approach
- Front-end time and cost worth the effort

